

# **V4000**

## **Remote Video System**

### **Control Center Guide**

### **User Version**

# CONTENTS

<b>Introduction</b> .....	<b>4</b>
<b>Getting Started</b> .....	<b>5</b>
Installing Control Center.....	5
Defining Screen Resolution and Colors.....	6
<b>Running Control Center</b> .....	<b>7</b>
<b>Calling a Site</b> .....	<b>8</b>
<b>Playing Recorded Video Files</b> .....	<b>9</b>
<b>System Utilities</b> .....	<b>12</b>
<b>Unviewed Files</b> .....	<b>16</b>
<b>On-Connection Functions</b> .....	<b>16</b>
Video Windows.....	16
Assigning Names to Cameras.....	16
Video Brightness Setting.....	16
Communication Information.....	17
View Port.....	18
<b>PC System Settings</b> .....	<b>18</b>
<b>Setting System Parameters</b> .....	<b>20</b>
Communication and Modem Settings.....	20
Security.....	28
Sound.....	23
Callback.....	23
Printing.....	24
Folder.....	24
Bi-Directional (BIDI).....	25
<b>Additional Functions</b> .....	<b>26</b>
Short Cut for Quick Dial.....	26
Player Only Window.....	26
Create a New Shortcut.....	26
Answering Machine Defeat.....	27
<b>General System Maintenance</b> .....	<b>28</b>

Site List "Profile" Maintenance.....	28
Disk Maintenance.....	29
Set Schedule.....	29
<b>Appendix A - Direct Connection.....</b>	<b>30</b>
<b>Appendix B - Controlling Pan Tilt Zoom Cameras .....</b>	<b>32</b>
<b>Appendix C - Working with Multiple Modems .....</b>	<b>34</b>
<b>Regulations.....</b>	<b>35</b>

© 2005 OzVision, Inc. All Rights Reserved.

## **Trademark Information**

OzVision, OzLine, OzLine 4CS, OzLine 4VC, OzLine 12VC, OzLine 12CS and OzVision Compatible are trademarks of OzVision, Inc. All other trademarks are held by their respective owners.

# Introduction

This guide provides step-by-step instructions for installing and operating the **Control Center** software as well as a complete description of the system's capabilities and functions.

Once the **Control Center** software is installed, your computer becomes a video monitoring station with the following functions:

- ☆ Connect to any remote unit using the phone number and access code and monitor video.
- ☆ Digitally record the monitored video stream (including the time and date) on the computer's hard drive.
- ☆ Retrieve and view video using advanced methods such as date, time and site.
- ☆ Print images on a standard printer.
- ☆ Compare video streams coming from various sites, cameras, dates and times.
- ☆ **Password protect the Control Center.** Administrators can create new passwords and change existing ones.
- ☆ Remotely activate external devices directly from the **Control Center** computer.
- ☆ Monitor live video at remote site from a single camera or cyclic scanning of a number of cameras (60 minute time limit).
- ☆ **Control Center** can be initialized to open up as the top window whenever a video stream is received from a remote unit regardless of the program currently running.
- ☆ The Ozline unit can call back to the **Control Center** and reverse the phone charges.

# Getting Started

## Basic Hardware and Software Requirements

- **CPU:** Intel Pentium II 550 MHZ MMX or higher processor.
- **Memory:** 128MB of RAM
- **Free Space:** 5MB of available hard disk space.
- **Modem:** 33.6/56K
- **Operating System:** Windows 98 SE or higher.
- **Minimum screen resolution:** 800X600, 24 true-bit colors.

---

**Notes:** 1. When using **Windows 2000** you must define the modem settings in your PC. Go to Desktop>My Computer>Control Panel>Modem. Check the box, **cancel the call if not connecting within 30 seconds**.

2. The Windows installation procedure is slightly different in **Window XP**.

---

## Installing Control Center

Follow the instructions in the window that opened when you inserted the CD or:

1. Click on the **Start** button, at the bottom left corner.
2. Choose **Settings** from the menu.
3. Choose **Control Panel** from the **Settings** menu.
4. Double click the **Add/Remove Programs** icon.
5. Click **Install** to start the installation.
6. Insert the installation CD or diskette in the drive.
7. After the CD is in the drive, click **Next**.
8. The Windows installation program will search for the installation program on the disc and display it in the box marked Command line for installation program.
9. Click the **End** button.
10. The **Control Center Installation** screen appears. To cancel the installation, choose **Cancel**. To continue the installation, choose **Next**.
11. Several files required for the installation process will now be copied to your computer and the **Choose Destination Location** window appears. This screen is used to determine the directory in which the **Control Center** is installed. It is recommended that you install the program in the default directory. The directory name appears in the **Destination Folder** panel. After the destination folder is chosen, click the **Next** button to continue the installation.

12. Repeat the above procedure for the destination of the data files. Click **Next** to select the program folder window. The setup program will now copy the program files from the installation CD or diskette to your hard drive.
13. After copying all of the necessary files to your computer, the **Select Components** screen appears. Select one of the two following checkboxes:
  - **Create a Shortcut to Control Center on My Desktop.** Check this box if you want to create a shortcut on your desktop.
  - **Run Control Center automatically upon startup.** Check this box if you want Control Center to load on start up.
14. Click **Next** to continue the installation. The **Information** screen appears, confirming a successful installation.
15. Click **Finish**.

## Defining Screen Resolution and Colors

1. Right-click on an empty spot on the desktop.
2. Choose **Properties** from the menu. The **Display Properties** window appears.
3. Choose **Settings** (at the top right side of the dialog).
4. Set the display area to 800 by 600 pixels or higher.
5. Set the Color palette to 24 true bit colors.
6. Set the Font size to **Large Fonts**.
7. Confirm the new settings by clicking **Ok**.
8. Restart the computer if necessary.

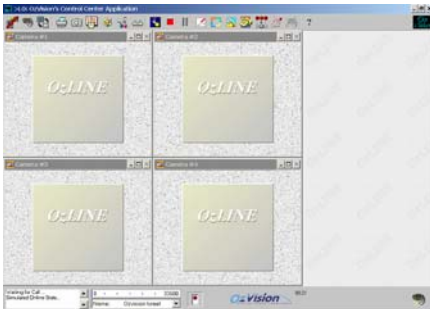
# Running Control Center

To run Control Center, double-click the Control Center shortcut on the desktop.



If the setup program did not correctly identify the modem or does not recognize the system profile, an error message will appear on the screen. Click **Ok** to open the **System Settings** dialog to configure the properties.


The software is installed with default passwords: name = 1 password = 1



## Main Screen

You can operate the software either from the pull down menus or from the dedicated tool bar located at the top of the screen.

Several of the buttons in the tool bar perform two tasks. The mouse pointer

changes to a special icon when placed on top of the button.  Left clicking will operate the function. Right clicking opens an alternative menu.

**Pull down menus:** to open and close the standard Windows pull down menus click **Ctrl + Shift + m**.

## Calling a Site



Click the **Call** button to open the Site List.

**Note:** To set up a new site, refer to PC System Settings in the Setting Remote Unit Parameters section.

Search Site by name.

Choose a Site and click **Connect** (or double click on the site).

The Edit button will open the site info window for editing.

The System button allows you to setup system parameters.

The computer will call the site, and connect to the remote unit using the site's phone number (as explained in the Updating Site List chapter). The phone number will appear in the **Modem Dialog Box**.

You will be asked to enter a Password. Enter the same Password in the two fields and click **Ok**.

Set Remote Unit Password

for site: 24

ID: 429074996

Version: OnLINE 4VC-2.53.46

Enter Password:

Confirm Password:

Ok

The unit saves the password and sends a unique ID to the software. The software identifies the new ID and asks you to confirm it. Click **Ok** to accept the new ID.

Site "Demo Site" not Installed:

No ID found in 'ini' file.

If new ID is not accepted, connection will be broken.

Accept ID = 4290970112 for Site 'Demo Site'?

Ok Cancel

Click **Call** again to disconnect and terminate the remote unit monitoring session.

**Please Note:** There is a 60 minute time limit for the connection.



# Playing Recorded Video Files



Clicking **Play** (top left) will open the stored video **playback** window.



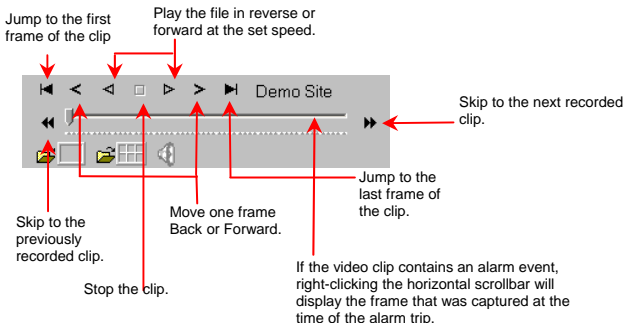
The **vertical scrollbar** adjusts the viewing speed. While playing the video file, you can slide the scrollbar to run the file faster or slower.

The **horizontal scrollbar** represents the position of the video image. Playing the video file will cause the scrollbar to move from left to right. Red tick marks appear below the horizontal scrollbar in positions corresponding to Pre- and Post-Alarm frames. All non-alarm frames are marked with gray ticks.

**Video Information:** Site name, camera name (if defined), date, time, number of frames and Zone number.

Opens the video in spread format allowing overview of events.

To open a stored video file, first open the **Site** and **Files list** by clicking the **Open file** icon on the left corner of the **playback** window.

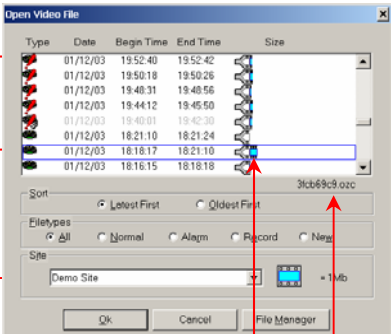


## The Recorded Files List

**Type** – This icon describes the file type. A red diagonal exclamation mark indicates an alarm file.

**Date, Begin Time, End Time**

**Site Name**



**Size** - Graphical representation of the file size. Each frame represents 1MB.

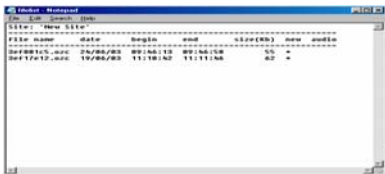
**File Name**

## File Management

- Sort** – Files are sorted by date and time. The most recently recorded file appears at the top of the list, and the oldest file appears at the bottom. Choose **Oldest First** to reverse the order. Choose **Latest First** to return to the original sorting order.
- File Types** – Displays the types of files in the list.
- All** – Shows all the files.
- Normal** – Shows only normal files. Does not display alarm files.
- Alarm** – Shows only alarm files. Does not display normal files.
- Record** – Displays files that have been downloaded from recording units.
- New** – Shows unviewed files from all available sites.
- Site** – When the list is opened, the files from the first site in the site list are displayed. You can choose another site from the drop down list box to display files recorded from that site.

## Export File List

Click the file and press the **F4** button. The **filelist-notepad** screen will open. You will now be able to export the file list to a text file.



## Choosing Files to View

Double-click the file, or highlight the file and click **Ok** to open the file. The first image will appear on the screen. The title bar will display the camera number, as well as the date and time the image was received.

## Deleting /Copying Files

Click **File Manager**. Choose the files to be deleted or copied by pointing the mouse and clicking the right button. The selected files will become red.

Click **Delete** or hit the **Delete** key to delete the selected files. Enter a valid username and password to proceed.

Click **Copy** or **F5** to copy the files to another directory.

Click **F6** to move the files to another directory.

# System Utilities



Click **Arrange window** to minimize all live video windows and maximize the playback windows. A second click of this button will reverse the operation.

You can set video windows to any size and location. To save these settings, click the right mouse button and select **Save settings**. To use the saved settings, select **Use save settings** in the pull down menu.



The **Print** button enables you to print from any video window to any printer connected to the PC including a FAX device. Use **Print option** from the system menu to set print scaling. To print in the exact resolution (no scaling), drag the video window to this button.



The **Snapshot** button saves the picture in the active window as a Bitmap, which can be transferred to a CD or any other removable storage device.



Set up automatic communication using the **Schedule** button (additional settings are available using **set schedule**). A right mouse click will open a menu that can enable or disable the schedule function.



**Image enhancement.** This button activates I-View, a graphical application that allows you to enhance or enlarge the picture in the active window. You can also print or save it.

Every video window can be dragged and dropped by left clicking the mouse.



This button opens the **Systems maintenance** utility that allows you to edit and add remote sites as well as setting all systems parameters. More information on setup functions are available in the Systems Settings chapter.



This button opens the **Site map** with a left mouse click, or site text information with a right mouse click (if a site map has been added).

To add a map to the site, insert a BMP file named '**sitemap.bmp**' into the site directory called **Sites** that is located in the main directory of the **Control Center** software.

Right clicking the mouse will open a text file.



**This feature is not active for this version.**



The Control Center automatically records all monitored video on connection. This button will **stop the recording** of the video on the hard disc. Click this button again to resume recording. This function can be password protected.



During video transmission, you can **freeze** the video image by clicking on this button, Click again to **unfreeze** the image. (This has no effect on recording).



**This feature is not active for this version.**



To **Cycle all cameras**, click this button. Right-click to choose the cycle plan of the cameras. The select camera window will open, check the cameras you want to cycle and click **Start**.



To stop cycling, click on any one of the opened video windows. While Cycling, the unit will transmit full JPEG compressed frames



**This feature is not active for this version.**



The **callback function** allows you to reverse the phone charges.

This will open a window that will let you operate the call back function in one of the following ways:

- Calling back to one of the two default phone numbers stored in the unit
- Calling back to one of the numbers from the Callback list.
- Calling back by manually entering a one-time callback number.

After picking or entering a number to callback, simply click the call back button in the callback window.



**Auto camera-tracking alarm.** The live camera on the screen will automatically switch when an alarm occurs during connection.



**Download** the recorded files from the unit.



This button activates the **Auto help function**, which provides additional information on every function button or window in the Control Center software.

Right click to open an additional information menu :

About  
Command Line Options  
FAQ  
Customer Support  
Collate SW Report

From this menu you can select:

**About** - information on the software version,

**Command Line options**

**FAQ** - answers to frequently asked questions

**Customer support** - how to contact the support department

**Collate SW Report** – Create a zip information file (that includes software version and date, PC operating system, CPU, disk volume, log files and sites list), which will provide technical support with all the information that they need to troubleshoot any problems.

## Unviewed Files



The **Unviewed Files** button appears at the bottom right corner of the screen. Clicking this button will open a play back window and a list of all unviewed files from all sites. Sites are displayed in the field normally used to indicate file size. (Unviewed files are files that have been received and recorded but have not been played). The only way to move a file from this list is to play it. It is then transitioned to the All Files list.

Right click this button for the option to clear the unviewed file list.

## On-Connection Functions

When communication with a site is established - whether as a result of an alarm or initiated from the PC - a few changes will appear on screen.

### Video Windows

Video windows open automatically on-connection (the number of windows is equal to the number of cameras at the site). To select a specific camera, place the mouse on the camera window and left click.

### Assigning Names to Cameras

While online, camera names will appear in the title bars of the camera windows. When you run Control Center for the first time, the names will take the default form - 'CAMERA #'. Camera names can be changed by double clicking the title bar and entering a new name. When done, hit **ENTER**.

### Video Brightness Setting

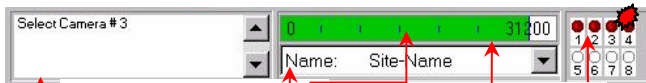
To change the brightness settings for each camera, move the cursor to the bottom of each window and wait. A brightness scrollbar will appear. Drag the scrollbar to change the brightness.



To set the new brightness as default, go to **Save Video Brightness** in the Setting remote unit parameters.



## Communication Information



**Connected Site Name.** Pressing the button on the end will open the site information window.

**Maximum Communication speed** is based on the quality of the communication line

### Modem status information.

When the software is in standby mode (no communication) and everything is Okay, the window will show **Waiting for Call**

### Real data transmission speed indicator.

Placing the mouse over this indicator indicates transmission speed in frames per second and in bits per second.

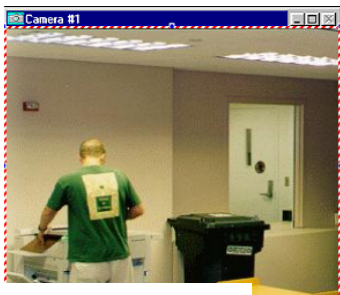
**Alarm indicators** at the connected remote site. This display will appear only after connecting to a site. The dark red LED's indicate that the detector is normal mode. When the detector changes status, the LED will switch color to a bright light red.

## Site Information Window

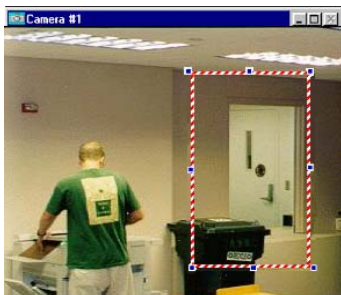
Name:	site name
ID:	4294967295
Address:	site adress
Contact:	manager or contact name
Tel:	contact telephone number
Cust. ID:	0

## View Port

While connected to the unit, you can choose to view part of the frame and receive live video only from this section. This will give you a higher frame rate. To operate the **View Port**, right click anywhere in the video window. A red/white/blue frame will appear.



Resize and move this frame by using the mouse



Right click inside the frame to set the **View Port**. The frame will turn red and white only and the unit will send updates only in the marked area.

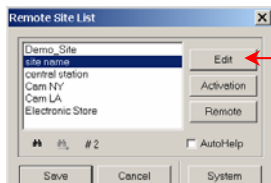
To disable **View Port**, right click in the frame then click the left click outside the frame and right click again anywhere.

# PC System Settings

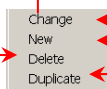
To enter the settings press the Setup button.



To enter a new site or edit an existing one:



The Edit button will open a pull down list:



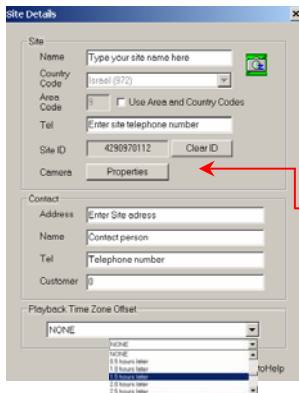
To Change site settings, select a site and press change

Enter a New site

Delete a site from the list. Close the site list editing button panel.

Enter a new site while duplicating the information from an existing site

Click the **Save** button in the site list window to **save the new parameters**.



Every site includes:

Site Name

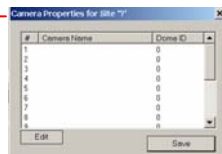
Unit telephone number

Address

Contact name

Contact telephone number

Customer serial number or ID



To enable adding camera name and dome ID offline, see appendix B (this can also be done on-line)

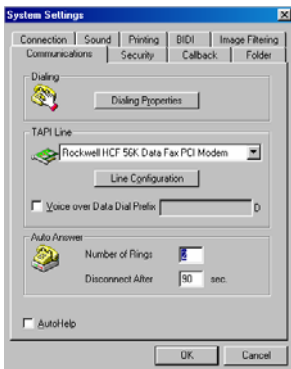
# Setting System Parameters

To enter control center parameters click the **System** button in the site list window.

The control center parameters are divided into sub groups:

- ◀ Communication
- ◀ Connection
- ◀ Security
- ◀ Sound.
- ◀ Callback
- ◀ Printing
- ◀ Folder
- ◀ Bi Directional

## Communication and Modem Settings



The control center software runs under Windows TAPI. The software uses the modem according to the default Windows settings.

The **Dialing Properties** and the **Line Configuration** buttons open the modem settings. Changes made here are only temporary and the modem settings will return to default after the session.

If your PC is installed with more than one modem you can select the modem to be used by the control center software.

**Auto Answer** – the auto answer function has two parameters:

**Number of Rings** – the number of rings before phone line pickup

**Disconnect After** – the PC will disconnect after the set time and only when the remote unit calls your PC.

## On-Connection



The control center software can automatically respond to an incoming call. It can either pop up on the screen above all other open software windows in either a maximum or smaller window, or it can flash the software title button at the bottom of the screen. Check the desired option.

### Maximize Application Window (default)

The control center software will pop up in full screen if an alarm call has been received and the software is activated.

### Video Window Popup.

The control center software will open a small video window if an alarm call has been received and the software is activated.

### Flash Window Caption.

If an alarm call has been received and the software is activated in minimized window format, the button at the bottom of the screen will flash. A click on this button will open the software and maximize the window.

## Security

To set passwords and levels of access for a User, press the **Password Setup** button. You will be requested to enter a sysop name and password in order to edit, add or remove a password.



Every operation of the control center software as described in this manual can be restricted by using a password.

By using passwords, operators can have either a User or System Operator (Sysop) level of access.

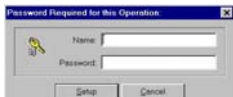
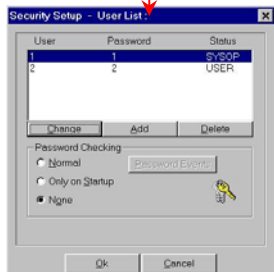
The default passwords are:

User - name = 2 password = 2

Sysop - name = 1 password = 1

Enter a Sysop name and password. If this is the first time, enter name and password as '1' and remember to remove this default sysop from the password list.

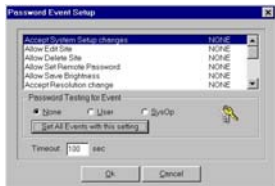
The password user list will open.



Click Change, Add or Delete to set up a user. A secondary edit window will open allowing you to enter a name, password and define the level of security for this user.



To activate the software's password security you must select Password Checking to be a choice other than none (the default). If Normal is selected and the **Password Event** button is pressed, a new setup window will open that will enable you to select specific operations as well as the level of authorization.



Select the level of authorization for every function.

Set the timeout in seconds. You will not be requested to enter your password again during this time even if you are entering a function that requires a password.

Click **Ok** when done to save the new settings.

To view the system's log file, click **View log files** in the main security window. The software saves two log files: Active and Previous. The length of the log file is set in the edit window.

## Sound

The control center software supports voice alerts from your PC on events.

To disable all sound functions check the Disable Sound check box.



Three voice alerts are optional in the following cases:

1. When the PC receives an alert call.
2. When a connection from the PC to a unit is established.
3. When a scheduled connection from the PC is established.

## Callback



This window includes your private callback telephone book.

Use the Edit, Insert, Duplicate and Delete buttons to update the book.

These numbers will be used when activating the callback function.

## Printing

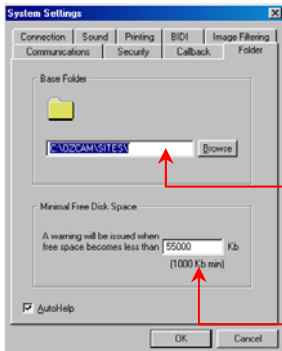
Set the printing parameters here to assure the best output.

- ❖ **Best Fit** is the default and is recommended.
- ❖ **Stretch to Page** will give you the maximum print size.
- ❖ **Scale** provides a manual option to change the size of the video print on the paper.

These settings will be saved and used as defaults. If the default printer is a fax, the image will be sent as a fax.



## Folder



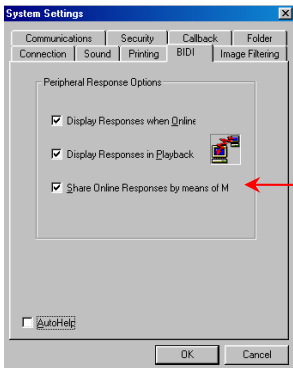
All recorded video and audio received from sites is stored in directories that are the same name as the site.

All folders are located in one main default directory called **SITES**, which is in the systems directory. This directory can be moved to anywhere on your hard drive or even to a network disk by entering the exact path in this box.

**Minimal Free Space** – You will receive a warning when free space becomes less than the defined number of Kb.



## Bi-Directional (BIDI)



A shared memory space used by Control Center and residential software for receiving and sending data to peripheral systems connected to the unit.

# Additional Functions

## Short Cut for Quick Dial

To create a quick dial icon so you can call directly from your desktop to a desired site:

1. Click the control center icon.
2. Right-click **Properties**.
3. At the end of the target string, enter a space and then add the site position # (This number is the site's position in the site call list - number one is the first and so on).
4. You can change the icon by clicking the Change icon button.

## Player Only Window

To create an icon that will open a player only window, follow steps 1 to 3 as above in creating a quick dial icon and add a space and the letter "-P" at the end of target string.

## Create a New Shortcut

1. Click the control center icon.
2. Right-click once.
3. Select **Create shortcut** from the list.
4. To change the name of the new shortcut click the selected icon's name and enter the new name.

## Answering Machine Defeat

To program the Answering Machine Defeat:

1. Set the unit to answer after 15 rings.
2. Press the UPLOAD button and disconnect.
3. Change the site's phone number by adding ( ,,,, ? ) at the end of the number.
4. Call the unit. At this stage you should hear 1-3 rings (if you hear more than 3 rings, decrease the number of commas, if less than 3 rings are heard add more commas).
5. The Control Center will automatically disconnect, and will than reconnect, whereupon the unit should answer immediately.

---

**Note:** Since the PTSN connection goes through a different number of switchers depending on the geographic location, the number of commas may differ. For further help and explanation contact our technical support department.

---

# General System Maintenance

To open the maintenance pull down menu, click the **Camera Icon** at the top left corner of the screen.

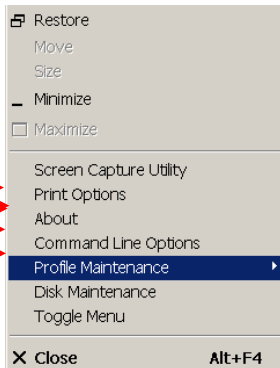
**Print Options** is a shortcut to printing parameters as described in the setting system parameters section.

**Command Line Options** enables specific software in the START mode.

**Profile Maintenance** is used to make back-up copies of all sites and clients information.

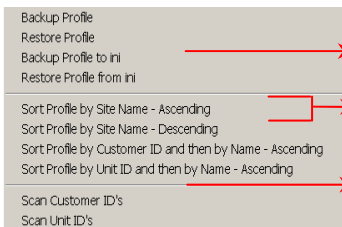
**Disk Maintenance** is used to auto-delete old files and obtain disk capacity information.

**Toggle Menu** enables pull down menus.



## Profile Maintenance

The profile is an encrypted data file containing information on all clients and sites. If for any reason this file is ever damaged or lost you will lose all information. It is recommended that you backup this file every few days.



**Backup to ini** saves the file in text format. This file can be printed and saved.

**Sort Profile** is used to resort the site list.

**Scan Customer ID's** verifies that there are no identical ID's.

## Disk Maintenance

The disk maintenance tool is used to set up a FIFO file system. Old files will be automatically deleted to free space for new files.

You can specify the type and age of files that will be deleted if there is no space available in the computer hard disk.



## Set Schedule



**Control Center** can automatically call sites at predefined times and days. These calls will trigger the unit to perform a defined task. **Control Center** will record those frames for future playback. If low communication is expected, increase this value.

If low communication

Click **Insert** to add a new scheduled connection. Enter the Time, Days and Cycles from each camera. Then select the function to be performed. **Cycle frames** will transmit and record single frame/s from every camera. **Motion seconds** will transmit and record streaming video for X seconds from every camera. **Download DRAM** will download the recorded video in the unit. If no camera was chosen, no call will be initiated.

---

**Note:** the PC will not call a site while you are using the PC. The PC must be idle for at least 30 seconds. If **Control Center** failed to connect to the site a failed dialog box will appear.

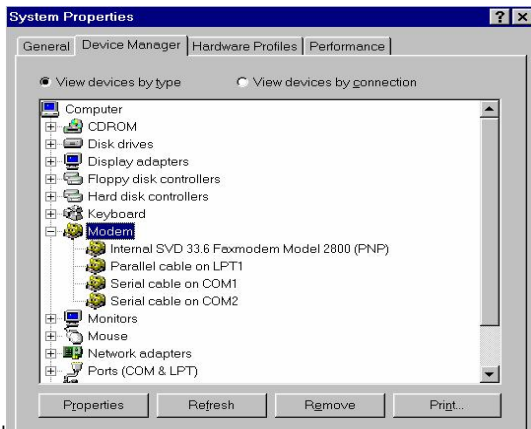
---

# Appendix A

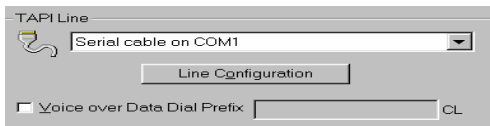
## Direct Connection

For a direct connection you must connect a Null Modem Cable (Serial Cable) between the external port in the unit (see the following diagram) and the RS232 port of the PC. In **Control Panel>System>Device Manager> Modems** check that you defined a Null Modem Cable as one of the modems

The device manager should look like this:



In the Control Center software, make sure that you are working with a Serial Cable instead of a modem, in **Setup/System TAPI line**.



Save the changes and click the **Call** button.

If the Baud Rate (the maximum speed parameter) is different between the PC and the **unit**, the software will try to find the baud rate from 1200 – 115000. If communication is still not successful, please check the ports and cable on your PC.

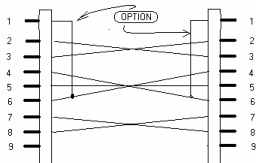
---

**Note:** If you try to connect directly to the unit that supports an RS485 port, the Direct Connection operation will fail because the PC port works with RS232 while the unit uses an RS485 port. They will not “understand” each other.

---

SCHEMATIC OF RECOMMENDED 'DIRECT CONNECTION CABLE'


BOTH SIDES ARE FEMALE CONNECTORS

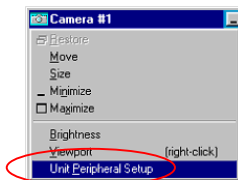
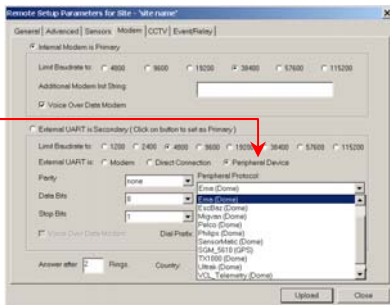


## Appendix B

# Controlling Pan Tilt Zoom Cameras

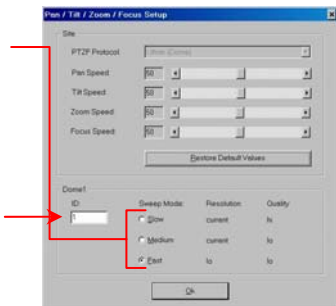
Each type of Dome camera has its own protocol so check that the Control Center software supports the Dome you are using. If the unit at the site has a PTZ control camera connected, you can control it directly from the live video window.






1. Dial the unit.
2. Click **Tuning>unit power-on parameters> modem screen**. Choose the required protocol by clicking Peripheral Device in the modem tab screen and define the baud rate of the Dome (usually between 2400 to 19200).
3. Click **Upload**. Disconnect and **restart the unit**.
4. Dial the unit again to receive video from the Dome.
5. Right Clicking the  button will open the following window.






- Set the speed of the Dome camera. If using a dry connect controlled motor, check the **Implement Pan Tilt Zoom** check box.
- Sweep Mode, Resolution and Quality settings determine the frame rate and quality during Dome camera movement.
- Type the ID number of the Dome camera in this box. Check with your vendor for the correct Dome ID. (The Dome ID should be one to three digits.) Click **Ok** to save the new parameters.



- Moving the mouse in the video window changes the mouse icon into 9 different operation options, depending on the location on the window. The operators are     in the left right top and bottom of the picture. Zoom and focus are in the corners. 

**Note:** If the Dome works with the RS485 protocol, connect the Dome to the unit to the TxDA and to the TXDB pins 1(-) and 2(+). If the Dome is working with the RS232 protocol, connect the Dome to pins 2 (RX) and 3 (TX) in the RS232 plug of the unit. There is an option to install an RS232 to RS485 converter. For details, please contact the unit supplier in your region.

- Test Dome** – Right click the  button opens a Test Dome window:

This feature enables installers to test the installation of the dome camera before connecting it to the OzLine unit.



## Appendix C

### Working with Multiple Modems

To work with a single modem double click the Control Center shortcut.

To add a second modem (8 modems and up to 64MB modem memory are available) to the Control Center software (Client running):

1. Copy the shortcut of the Control Center software on the Desktop:
  - Right-click the Shortcut.
  - Drag and drop it to another place on the Desktop.
2. Change the properties of the new Shortcut:
  - Right-click the new Shortcut.
  - Choose Properties.
  - In the Target field, add a space and then “-L1” after exe (Ozcam.exe -L1).
  - Click **Ok** to save the changes.
  - Double click the new Shortcut to run the Control Center software.
3. Define the second modem:
  - Click the **System Setup** button.
  - Click the **System** button.
  - Choose **System (client)** option. In the Communications section choose the second modem in the TAPI line field.
  - Click **Ok** to save the changes.
4. To define another modem (another client) repeat steps 1 to 4, but in step 2, type “-L2” (or -L3 or -L4 etc.) instead of -L1.
5. You can define local parameters in the Control Center application that is running with “-Lx” such as the Modem or On Connection Option in the Connection section. Editing all common data, Sites List and Scheduling is done only from the first instance of Control Center (-L0) or by pressing on the server when updating from additional modems.

# Regulations

**Note:** This equipment has been tested and found to comply with the limits for a Class B digital device, pursuant to part 15 of FCC rules. These limits are designed to provide reasonable protection against harmful interface in a residential installation. This equipment generates, uses and can radiate radio frequency energy and, if not installed and used in accordance with the instructions, can cause harmful interface to radio communications. However, there is no guarantee that interface will not occur in a particular installation. If this equipment does causes harmful interface to radio or television reception, which can be determined by turning the equipment off and on, the user is encouraged to try to correct the interference by one or more of the following measures:

- Reorient or relocate the receiving antenna.
- Increase the separation between the equipment and receiver.
- Connect the equipment into an outlet on a different circuit than the one that the receiver is connected to.
- Consult the dealer or an experienced radio/TV technician for help.

This product complies: EMC;89/336/EEC as amended by  
92/31/EEC and 93/68/EEC

Harmonized Standards to which Conformity is declared:

EN 55022:1994; EN 50082-1:1992

We hereby declare that the equipment conforms to the above directive and standard.

